

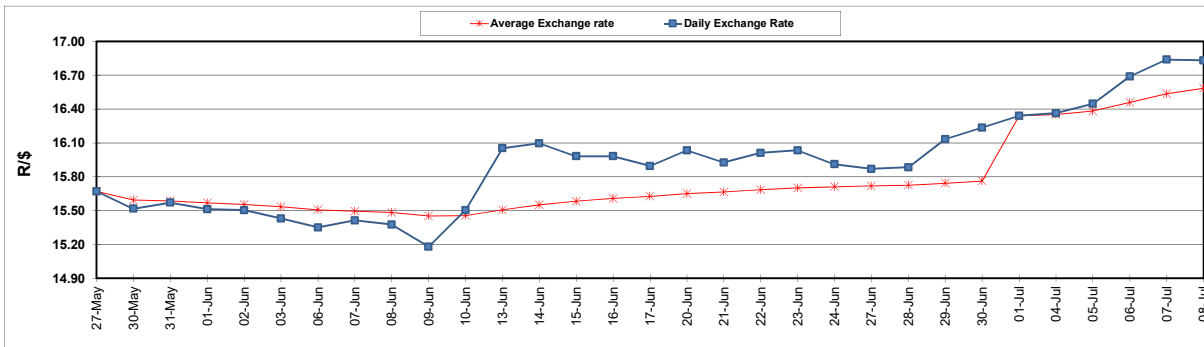
	PETROL 95 ULP	PETROL 93 ULP & LRP	DIESEL 0.05%	DIESEL 0.005%	ILL. PAR.
GAUTENG PUMP PRICE (SA c/l) AS FROM 06/07/2022	2,674.000	2,631.000	-	-	-
WHOLESALE PRICE (SA c/l) AS FROM 06/07/2022	-	-	2,540.440	2,552.840	1,986.288
SINGLE NATIONAL MAXIMUM RETAIL PRICE	-	-	-	-	2,623.000
BASIC FUEL PRICE - 08/07/2022 (SA c/l)	1,533.794	1,498.786	1,606.926	1,617.860	1,602.356
PRESS RELEASE CONTRIBUTION TO BFP 06/07/2022 - 08/07/2022 (SA c/l)	1,689.410	1,646.410	1,763.630	1,776.030	1,768.128
UNIT OVER/(UNDER) RECOVERY - 01/07/2022 (SA c/l)	155.616	147.624	156.704	158.170	165.772
AVERAGE BASIC FUEL PRICE 01/07/2022 - 08/07/2022	1,582.184	1,527.651	1,634.649	1,645.293	1,622.993
AVERAGE UNIT OVER/(UNDER) RECOVERY 01/07/2022 - 08/07/2022	16.226	37.759	50.982	53.237	62.135

ANALYSIS MOVEMENT OF AVERAGE OVER/(UNDER) RECOVERY

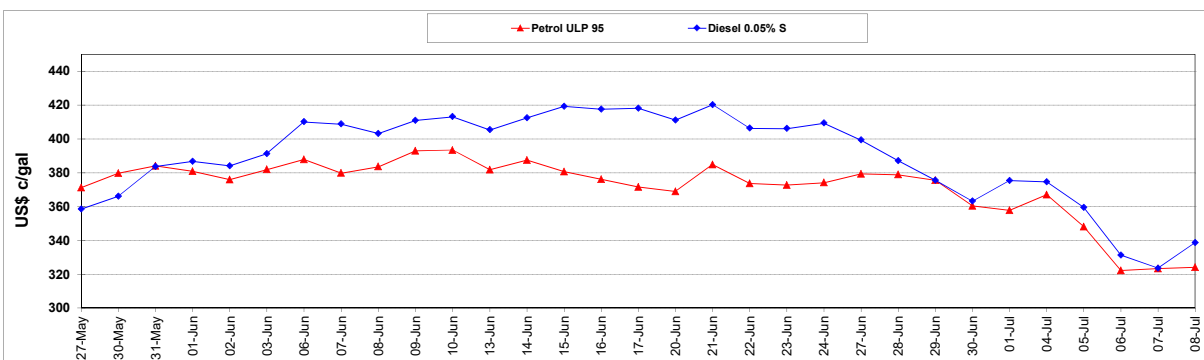
	PETROL 95	PETROL 93	DIESEL 0.05%	DIESEL 0.005%	ILL. PAR.
- MOVEMENT IN INTERNATIONAL PRODUCT PRICES	94.601	113.433	131.955	134.738	142.532
- MOVEMENT IN EXCHANGE RATE	(78.375)	(75.674)	(80.974)	(81.501)	(80.397)
AVERAGE UNIT OVER/(UNDER) RECOVERY 01/07/2022 - 08/07/2022	16.226	37.759	50.982	53.237	62.135

R/\$ EXCHANGE RATE - (R/\$16.8300 - 08/07/2022)

EXCHANGE RATE USED IN BASIC FUEL PRICE



INTERNATIONAL PRODUCT PRICES OF BASKET USED IN BASIC FUEL PRICE



BASIC FUEL PRICE IN SA CENTS PER LITRE

